



Certificate of Analysis

QA SAMPLE - INFORMATIONAL ONLY

1 of 3

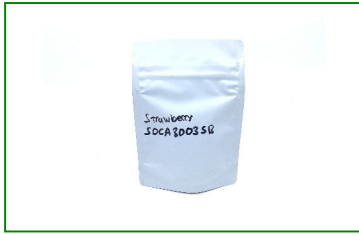
ICAL ID: 20231031-060
Sample: CA231031-016-057
Strawberry Gummy
Strain: Strawberry Gummy
Category: Ingestible
Type: Other

SoCal First Nations
Lic. #
25575 Highway 79
Santa Ysabel, CA 92070
Lic. #

Batch#: SOCA3003SB
Batch Size Collected:
Total Batch Size:
Collected: 11/02/2023; Received: 11/02/2023
Completed: 11/02/2023

Moisture NT Water Activity 0.511 aw	Δ 9-THC 10.54 mg/unit	CBD 0.02 mg/unit	Total Cannabinoids 10.93 mg/unit	Total Terpenes NT
---	--	----------------------------	--	----------------------

Summary	SOP Used	Date Tested	
Batch			Pass
Cannabinoids	POT-PREP-002	11/01/2023	Complete
Water Activity	WA-PREP-001	11/01/2023	Pass - 0.511 aw
Residual Solvents	RS-PREP-001	11/02/2023	Pass
Microbials			Complete
Mycotoxins	PESTMICO-LC-PREP-001	11/01/2023	Pass
Heavy Metals	HM-PREP-001	11/02/2023	Pass
Foreign Matter	FM-PREP-001	10/31/2023	Pass
Pesticides	PESTMICO-LC-PREP-001 / PEST-GC-PREP-001	11/01/2023	Pass



Scan to see results

Cannabinoid Profile

Analyte	LOQ (mg/g)	LOD (mg/g)	%	mg/g	mg/unit	Analyte	LOQ (mg/g)	LOD (mg/g)	%	mg/g	mg/unit
THCa	0.0128	0.0043	ND	ND	ND	CBGa	0.0046	0.0015	ND	ND	ND
Δ 9-THC	0.0046	0.0010	0.363	3.63	10.54	CBG	0.0046	0.0005	0.004	0.04	0.10
Δ 8-THC	0.0046	0.0014	ND	ND	ND	CBN	0.0046	0.0005	0.003	0.03	0.09
THCV	0.0046	0.0006	0.002	0.02	0.06	Total THC			0.36	3.63	10.54
CBDa	0.0049	0.0016	ND	ND	ND	Total CBD			0.00	0.01	0.02
CBD	0.0046	0.0008	0.001	0.01	0.02	Total			0.38	3.77	10.93
CBDV	0.0046	0.0004	ND	ND	ND						
CBC	0.0076	0.0025	0.004	0.04	0.12						

1 Unit = gummy, 2.9 g.

Total THC=THCa * 0.877 + Δ 9-THC + Δ 8-THC + d8-THC; Total CBD = CBDa * 0.877 + CBD. LOD= Limit of Detection, LOQ= Limit of Quantitation, ND= Not Detected, NR= Not Reported. Potency is reported on a dry weight basis. Instrumentation and analysis SOPs used: Cannabinoids:UHPLC-DAD(POT-INST-005),Moisture:Moisture Analyzer(MOISTURE-001),Water Activity:Water Activity Meter(WA-INST-002), Foreign Material:Microscope(FOREIGN-001). Density measured at 19-24 °C, Water Activity measured at 0-90% RH. All QA submitted by the client, All CA State Compliance sampled using SAMPL-SOP-001.

Terpene Profile

Analyte	LOQ (mg/g)	LOD (mg/g)	%	mg/g	Analyte	LOQ (mg/g)	LOD (mg/g)	%	mg/g
---------	------------	------------	---	------	---------	------------	------------	---	------

NR= Not Reported (no analysis was performed), ND= Not Detected (the concentration is less than the Limit of Detection (LOD)). Analytical instrumentation used: HS-GC-MS; samples analyzed according to SOP TERP-INST-003.



Infinite Chemical Analysis Labs
8312 Miramar Mall
San Diego, CA
(858) 623-2740
www.infiniteCAL.com
Lic# C8-000047-LIC

Josh M Swider
Josh Swider
Lab Director, Managing Partner
11/02/2023

Confident Cannabis
All Rights Reserved
support@confidentcannabis.com
(866) 506-5866
www.confidentcannabis.com



This product has been tested by Infinite Chemical Analysis, LLC using valid testing methodologies and a quality system as required by state law. All LQC samples were performed and met the prescribed acceptance criteria in 16 CCR section 15730, pursuant to 16 CCR section 15726(e)(13). Values reported relate only to the product tested. Infinite Chemical Analysis, LLC makes no claims as to the efficacy, safety or other risks associated with any detected or non-detected levels of any compounds reported herein. This Certificate shall not be reproduced except in full, without the written approval of Infinite Chemical Analysis, LLC.



Certificate of Analysis

QA SAMPLE - INFORMATIONAL ONLY

2 of 3

ICAL ID: 20231031-060
Sample: CA231031-016-057
Strawberry Gummy
Strain: Strawberry Gummy
Category: Ingestible
Type: Other

SoCal First Nations
Lic. #
25575 Highway 79
Santa Ysabel, CA 92070
Lic. #

Batch#: SOCA3003SB
Batch Size Collected:
Total Batch Size:
Collected: 11/02/2023; Received: 11/02/2023
Completed: 11/02/2023

Residual Solvent Analysis

Category 1	LOQ	LOD	Limit	Status	Category 2	LOQ	LOD	Limit	Status	Category 2	LOQ	LOD	Limit	Status			
	µg/g	µg/g	µg/g	µg/g		µg/g	µg/g	µg/g	µg/g		µg/g	µg/g	µg/g	µg/g			
1,2-Dichloro-Ethane	ND	0.264	0.088	1	Pass	Acetone	ND	51.246	0.716	5000	Pass	n-Hexane	ND	0.281	0.027	290	Pass
Benzene	ND	0.052	0.017	1	Pass	Acetonitrile	ND	0.42	0.14	410	Pass	Isopropanol	ND	2.86	0.614	5000	Pass
Chloroform	ND	0.076	0.025	1	Pass	Butane	ND	4.849	0.748	5000	Pass	Methanol	ND	2.602	0.867	3000	Pass
Ethylene Oxide	ND	0.579	0.179	1	Pass	Ethanol	343.3	7.575	2.525	5000	Pass	Pentane	ND	5.075	1.692	5000	Pass
Methylene-Chloride	ND	0.729	0.08	1	Pass	Ethyl-Acetate	ND	2.288	0.175	5000	Pass	Propane	ND	9.709	3.236	5000	Pass
Trichloroethene	ND	0.145	0.028	1	Pass	Ethyl-Ether	ND	2.869	0.389	5000	Pass	Toluene	ND	0.864	0.067	890	Pass
						Heptane	ND	2.859	0.496	5000	Pass	Xylenes	ND	2.572	0.326	2170	Pass

NR= Not Reported (no analysis was performed), ND= Not Detected (the concentration is less than the Limit of Detection (LOD)). Analytical instrumentation used: HS-GC-MS; samples analyzed according to SOP RS-INST-003.

Heavy Metal Screening

	LOQ	LOD	Limit	Status	
µg/g	µg/g	µg/g	µg/g		
Arsenic	ND	0.009	0.003	1.5	Pass
Cadmium	ND	0.002	0.001	0.5	Pass
Lead	ND	0.004	0.001	0.5	Pass
Mercury	ND	0.014	0.005	3	Pass

NR= Not Reported (no analysis was performed), ND= Not Detected (the concentration is less than the Limit of Detection (LOD)). Analytical instrumentation used: ICP-MS; samples analyzed according to SOP HM-INST-003.

Microbiological Screening

	Limit	Result	Status
	CFU/g	CFU/g	
Aspergillus flavus		NR	NT
Aspergillus fumigatus		NR	NT
Aspergillus niger		NR	NT
Aspergillus terreus		NR	NT
STEC		NR	NT
Salmonella SPP		NR	NT

ND=Not Detected. Analytical instrumentation used:qPCR; samples analyzed according to SOP MICRO-INST-001.



Infinite Chemical Analysis Labs
8312 Miramar Mall
San Diego, CA
(858) 623-2740
www.infiniteCAL.com
Lic# C8-0000047-LIC

Josh M Swider

Josh Swider
Lab Director, Managing Partner
11/02/2023

Confident Cannabis
All Rights Reserved
support@confidentcannabis.com
(866) 506-5866
www.confidentcannabis.com



This product has been tested by Infinite Chemical Analysis, LLC using valid testing methodologies and a quality system as required by state law. All LQC samples were performed and met the prescribed acceptance criteria in 16 CCR section 15730, pursuant to 16 CCR section 15726(e)(13). Values reported relate only to the product tested. Infinite Chemical Analysis, LLC makes no claims as to the efficacy, safety or other risks associated with any detected or non-detected levels of any compounds reported herein. This Certificate shall not be reproduced except in full, without the written approval of Infinite Chemical Analysis, LLC.



Certificate of Analysis

QA SAMPLE - INFORMATIONAL ONLY

3 of 3

ICAL ID: 20231031-060
Sample: CA231031-016-057
Strawberry Gummy
Strain: Strawberry Gummy
Category: Ingestible
Type: Other

SoCal First Nations
Lic. #
25575 Highway 79
Santa Ysabel, CA 92070
Lic. #

Batch#: SOCA3003SB
Batch Size Collected:
Total Batch Size:
Collected: 11/02/2023; Received: 11/02/2023
Completed: 11/02/2023

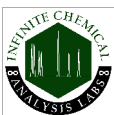
Chemical Residue Screening

Category 1	LOQ	LOD	Status	Mycotoxins	LOQ	LOD	Limit	Status		
	µg/g	µg/g	µg/g		µg/kg	µg/kg	µg/kg			
Aldicarb	ND	0.065	0.022	Pass	B1	ND	7.88	2.6	Tested	
Carbofuran	ND	0.030	0.009	Pass	B2	ND	6.18	2.04	Tested	
Chlordane	ND	0.075	0.025	Pass	G1	ND	8.99	2.97	Tested	
Chlorfenapyr	ND	0.075	0.025	Pass	G2	ND	5.72	1.89	Tested	
Chlorpyrifos	ND	0.053	0.018	Pass	Ochratoxin A	ND	11.72	3.87	20	Pass
Coumaphos	ND	0.056	0.018	Pass	Total Aflatoxins	ND		20	Pass	
Daminozide	ND	0.079	0.026	Pass						
Dichlorvos	ND	0.067	0.022	Pass						
Dimethoate	ND	0.036	0.012	Pass						
Ethoprophos	ND	0.053	0.017	Pass						
Etofenprox	ND	0.030	0.008	Pass						
Fenoxycarb	ND	0.043	0.014	Pass						
Fipronil	ND	0.045	0.015	Pass						
Imazalil	ND	0.047	0.016	Pass						
Methiocarb	ND	0.047	0.016	Pass						
Mevinphos	ND	0.042	0.014	Pass						
Paclbutrazol	ND	0.040	0.013	Pass						
Parathion Methyl	ND	0.024	0.008	Pass						
Propoxur	ND	0.047	0.016	Pass						
Spiroxamine	ND	0.032	0.011	Pass						
Thiacloprid	ND	0.042	0.014	Pass						

Category 2	LOQ	LOD	Limit	Status	Category 2	LOQ	LOD	Limit	Status		
	µg/g	µg/g	µg/g	µg/g		µg/g	µg/g	µg/g	µg/g		
Abamectin	ND	0.030	0.010	0.3	Pass	Kresoxim Methyl	ND	0.038	0.012	1	Pass
Acephate	ND	0.050	0.016	5	Pass	Malathion	ND	0.035	0.012	5	Pass
Acequinocyl	ND	0.059	0.019	4	Pass	Metalaxyl	ND	0.031	0.010	15	Pass
Acetamiprid	ND	0.044	0.015	5	Pass	Methomyl	ND	0.048	0.016	0.1	Pass
Azoxystrobin	ND	0.029	0.010	40	Pass	Myclobutanil	ND	0.055	0.018	9	Pass
Bifenazate	ND	0.035	0.012	5	Pass	Naled	ND	0.051	0.017	0.5	Pass
Bifenthrin	ND	0.040	0.013	0.5	Pass	Oxamyl	ND	0.046	0.015	0.3	Pass
Boscalid	ND	0.060	0.020	10	Pass	Pentachloronitrobenzene	ND	0.054	0.018	0.2	Pass
Captan	ND	0.358	0.120	5	Pass	Permethrin	ND	0.030	0.008	20	Pass
Carbaryl	ND	0.049	0.016	0.5	Pass	Phosmet	ND	0.038	0.012	0.2	Pass
Chlorantraniliprole	ND	0.063	0.021	40	Pass	Piperonyl Butoxide	ND	0.030	0.008	8	Pass
Clofentezine	ND	0.039	0.013	0.5	Pass	Prallethrin	ND	0.068	0.023	0.4	Pass
Cyfluthrin	ND	0.056	0.019	1	Pass	Propiconazole	ND	0.059	0.019	20	Pass
Cypermethrin	ND	0.044	0.015	1	Pass	Pyrethrins	ND	0.030	0.004	1	Pass
Diazinon	ND	0.030	0.006	0.2	Pass	Pyridaben	ND	0.035	0.012	3	Pass
Dimethomorph	ND	0.042	0.014	20	Pass	Spinetoram	ND	0.030	0.006	3	Pass
Etoxazole	ND	0.030	0.008	1.5	Pass	Spinosad	ND	0.030	0.004	3	Pass
Fenhexamid	ND	0.039	0.013	10	Pass	Spiromesifen	ND	0.042	0.014	12	Pass
Fenpyroximate	ND	0.030	0.010	2	Pass	Spirotetramat	ND	0.041	0.013	13	Pass
Flonicamid	ND	0.081	0.027	2	Pass	Tebuconazole	ND	0.044	0.014	2	Pass
Fludioxonil	ND	0.046	0.015	30	Pass	Thiamethoxam	ND	0.055	0.018	4.5	Pass
Hexythiazox	ND	0.078	0.026	2	Pass	Trifloxystrobin	ND	0.031	0.010	30	Pass
Imidacloprid	ND	0.071	0.023	3	Pass						

Other Analyte(s):

NR= Not Reported (no analysis was performed), ND= Not Detected (the concentration is less than the Limit of Detection (LOD)). Analytical instrumentation used: LC-MS-MS & GC-MS-MS; samples analyzed according to SOPs PESTMYCO-LC-INST-004 and PEST-GC-INST-003.



Infinite Chemical Analysis Labs
8312 Miramar Mall
San Diego, CA
(858) 623-2740
www.infiniteCAL.com
Lic# C8-000047-LIC

Josh M Swider

Josh Swider
Lab Director, Managing Partner
11/02/2023

Confident Cannabis
All Rights Reserved
support@confidentcannabis.com
(866) 506-5866
www.confidentcannabis.com



This product has been tested by Infinite Chemical Analysis, LLC using valid testing methodologies and a quality system as required by state law. All LQC samples were performed and met the prescribed acceptance criteria in 16 CCR section 15730, pursuant to 16 CCR section 15726(e)(13). Values reported relate only to the product tested. Infinite Chemical Analysis, LLC makes no claims as to the efficacy, safety or other risks associated with any detected or non-detected levels of any compounds reported herein. This Certificate shall not be reproduced except in full, without the written approval of Infinite Chemical Analysis, LLC.